

This document provides instructions for installing Nurse Courier 3 Editor V2.0 and supporting software from a CD or downloaded self-extracting .exe file. The installation consists of the following:

COMPONENT	PURPOSE
Nurse Courier 3 Editor	Allows you to configure system hardware.
Tel-Comm Configuration Utility	Allows you to set up the port and communication settings for your PC so that Tel-Comm can communicate with a Nurse Courier Controller.
Tel-Terminal	Allows messages to be sent between the PC and a Nurse Courier Controller. Tel-Terminal is typically used for troubleshooting and debugging purposes.

In addition, installation also consists of the components below, which are required in order for the above software to operate. Note that these components are designed to support the main software applications. Once installed, they run behind-the-scenes, so no user interaction is required.

COMPONENT	PURPOSE
Tel-Comm	Allows the PC to establish a connection with a Nurse Courier Controller.
NC3 Editor Link for Tel-Comm	Allows the PC to perform data uploads to a Nurse Courier Controller.
NC3 Tel-Terminal Link for Tel-Comm	Provides the software interface for Tel-Terminal and Tel-Comm.

System Requirements

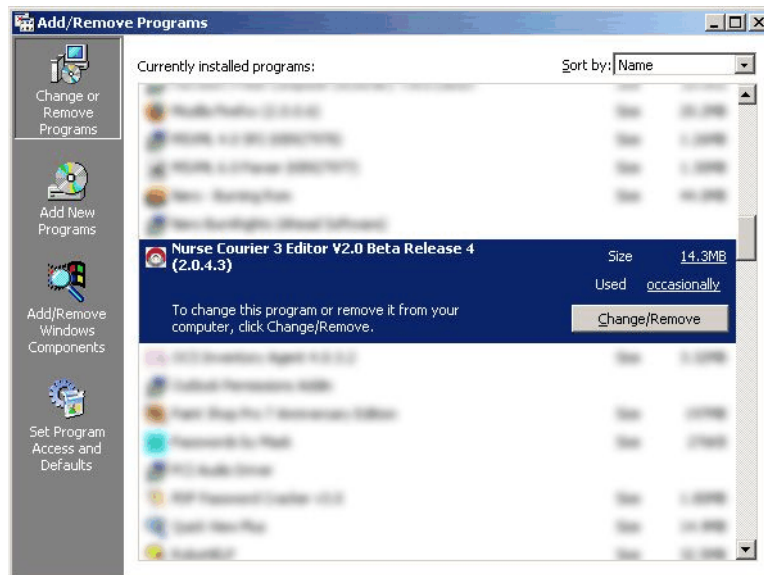
- Pentium III 450 MHz processor or faster (recommended)
- 128 MB RAM or more
- Microsoft® Windows® 2000 (with Service Pack 4 installed) or Windows® XP Professional (with Service Pack 2 installed) operating systems
- 100 MB free disk space for optimal desktop performance

Uninstalling the Previous Version of the Nurse Courier 3 V2.0 Editor

NOTE: Before proceeding with the installation, close all other applications running on your PC. Ensure that any older versions of the Nurse Courier 3 Editor V2.0 software are closed, including Tel-Comm. To close Tel-Comm, either use Windows® Services (refer to the Nurse Courier 3 Software Overview Guide), or restart your PC before installing this upgrade.

If you have an older or beta version of the Nurse Courier 3 Editor V2.0 installed, complete the following steps to uninstall it.

1. Open **Control Panel**. (From the Start Menu, go to **Start, Settings, Control Panel**)
2. Open **Add/Remove Programs**.
3. In the list of installed programs, locate the previous version of the Nurse Courier 3 Editor V2.0, then click on it.



4. Click **Change/Remove**, then click **Yes** to uninstall the beta software.

NOTE: Do not uninstall the Nurse Courier 3 Editor V1.0. This version of the editor can still be used to manage sites running V1.0 firmware.

Installing the Nurse Courier 3 Editor V2.0 Software

The following instructions guide you in installing Nurse Courier 3 Editor and all supporting software. During installation, you will be prompted for a **Registration Number**. Contact *Telecor T3 Technical Support* at (905-564-0801) to obtain a registration number.

NOTE: You can install Nurse Courier 3 Editor without a Registration Number, but it will run in Staff Mode with reduced capabilities. [See the Nurse Courier 3 Software Overview Guide for more information.](#)

To install the software from a CD:

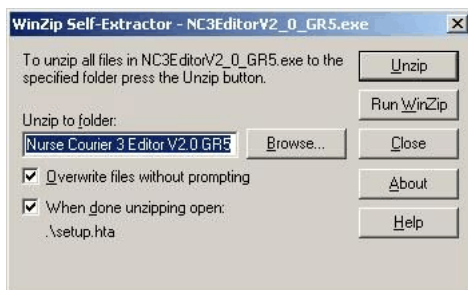
1. Insert the software installation CD into the CD drive.
2. If the CD auto-starts, proceed to Step 3 to start the installation process. If the CD does not auto-start when you put it into the CD-ROM drive, follow the steps below.
 - a) Open **My Computer**.
 - b) Right-click your CD drive with the NC3 CD inside.
 - c) Click **Autoplay**.

If a security warning message pops up stating “Windows has blocked this software because it can’t verify the publisher,” follow the instructions under **Troubleshooting** on page 6. Otherwise, continue to page 4.

To install the software from a downloaded self-extracting .exe file:

1. Open the previously downloaded **NC3EditorV2_0_GR5.exe** file.

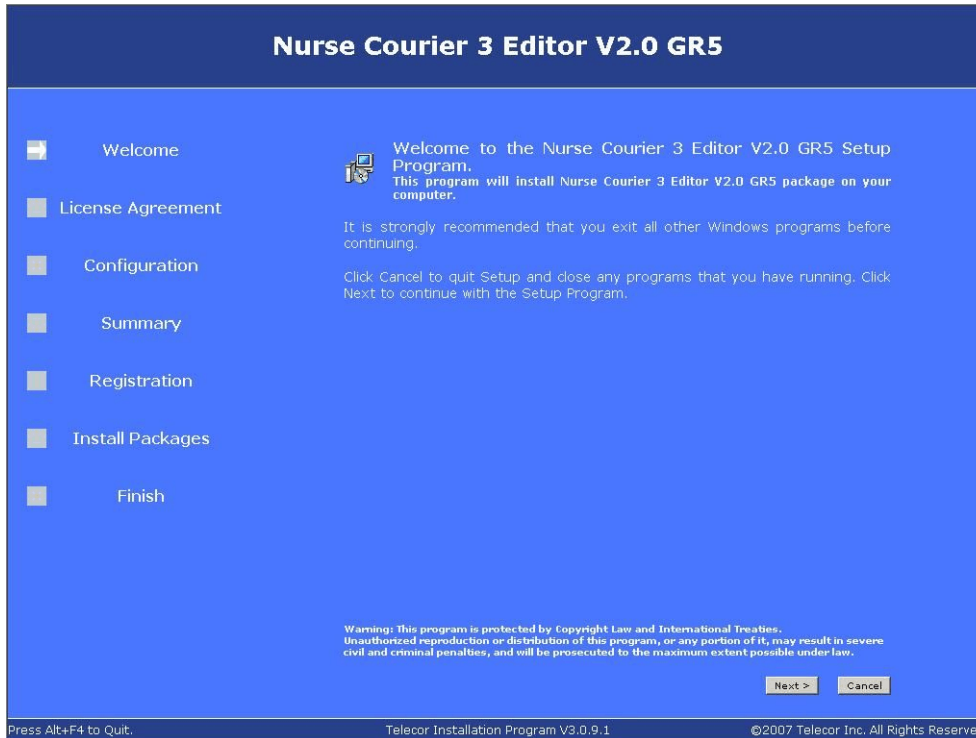
Ensure the checkbox beside “When done unzipping open: .\setup.hta” is checked. Click **Unzip** to extract the installation files. Click **OK** when all the files have been extracted.



If a security warning message pops up stating “Windows has blocked this software because it can’t verify the publisher,” follow the instructions under **Troubleshooting** on page 6. Otherwise, continue to page 4.

Running the Telecor Installation Program

1. The **Telecor Installation Program** welcome screen appears. Follow the instructions on the screen to proceed with installation.



Note about Installing Tel-Comm:

During the Tel-Comm installation, you will be prompted to create a Tel-Comm remote access password. The installation requires you to enter a password in order for Tel-Comm to run properly. Enter any alphanumeric password (**do not** leave this box blank or click **CANCEL**).



Please note that the remote access feature is currently not supported by Nurse Courier 3 Editor and you will not be required to use this password. Telecor anticipates a future release of Nurse Courier 3 Editor that will allow for remote access to the Nurse Courier 3 System via a LAN, WAN, or the Internet.

2. When finished installing software, click **Exit** to exit the installation program.



3. If you had to change your Internet Security Settings to install the Nurse Courier 3 Editor, restore them to their previous settings.
4. Restart your PC.
5. To run a program, from the Start Menu, go to **Start, Programs, Telecor**, and click on the respective shortcut (**Nurse Courier 3 Editor, Tel-Comm Configuration Utility, or Tel-Terminal**) or open the desired shortcut on the desktop.

Troubleshooting

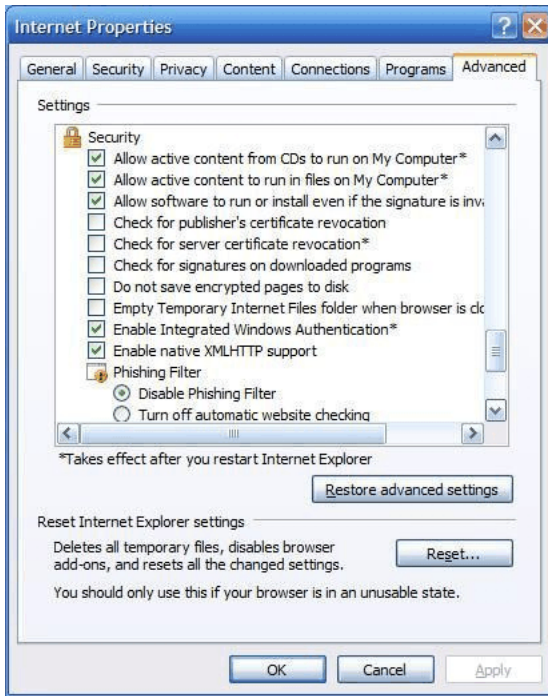
If a security message pops up stating “Windows has blocked this software because it can’t verify the publisher,” follow these instructions to change your security settings so you can install the Nurse Courier 3 editor.

NOTE: Once you have successfully installed the Nurse Courier 3 Editor, you should restore your security settings to their previous state. Failure to do so may leave your system vulnerable to security risks.



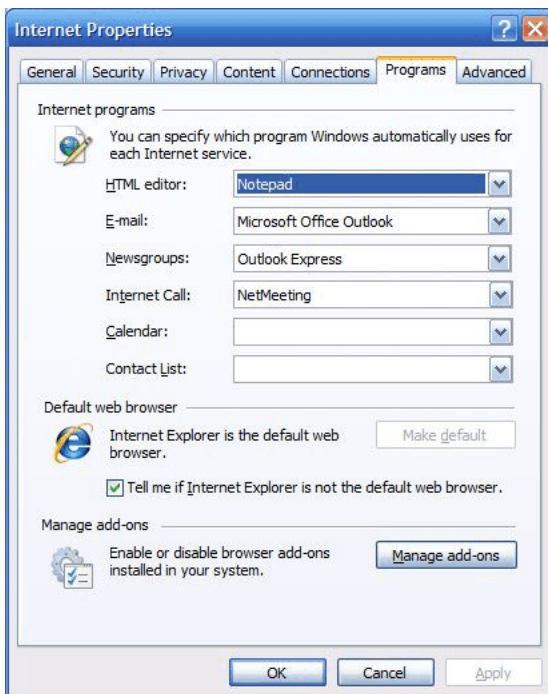
1. Click **OK** to dismiss the security warning and exit the installation program. If installing the Nurse Courier 3 Editor from a CD, do not remove the Installation CD from your CD drive.
2. Open **Control Panel**.
3. Open **Internet Options**.
4. Click on the **Advanced** tab.
5. Scroll down to the **Security** section.
6. Ensure that the following items are checked. Note that these should only be checked for the purpose of installing the Nurse Courier 3 Editor. Leaving them checked may leave your computer vulnerable to security risks.
 - Allow active content from CDs to run on My Computer
 - Allow active content to run in files on My Computer
 - Allow software to run or install even if the signature is invalid
7. Ensure that the following items are unchecked. Note that these should only be unchecked for the purpose of installing the Nurse Courier 3 Editor. Leaving them unchecked may leave your computer vulnerable to security risks.
 - Check for publisher’s certificate revocation
 - Check for signatures on downloaded programs

Your internet security settings should now look similar to the screen shot below. Click **OK** to accept these changes.

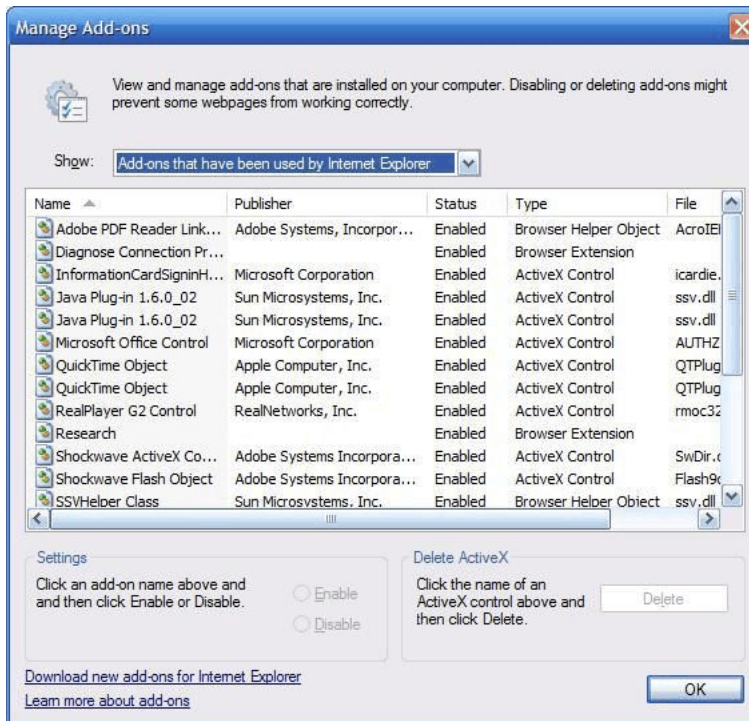


8. Restart the installation program by following the instructions on page 3.

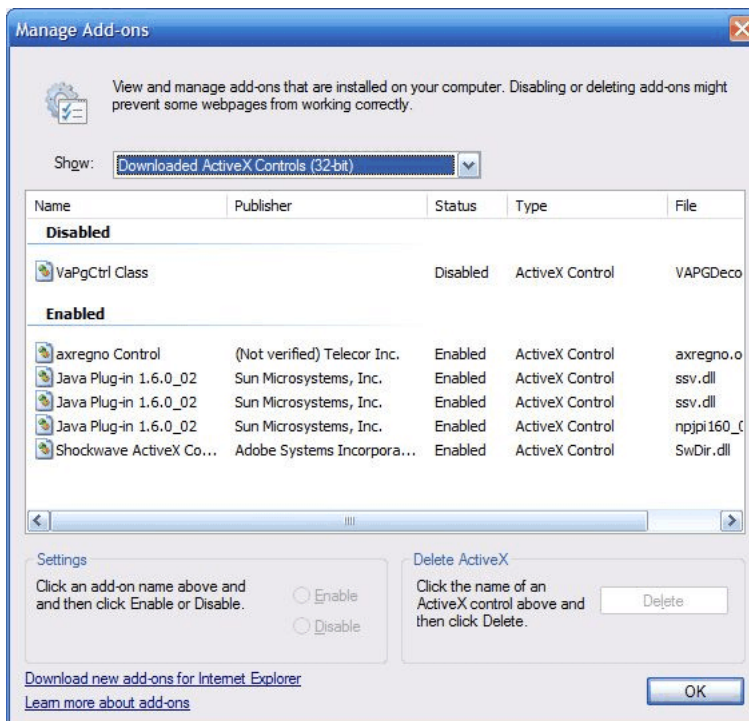
If you still receive the security message, you may have an outdated version of the axregno Control installed. From your **Control Panel**, open **Internet Options**, then click on the **Programs** tab.



9. Click **Manage add-ons**.



10. Beside “Show,” select **Downloaded ActiveX Controls (32 bit)** from the drop-down box.



11. In the **Name** column, locate “**axregno Control**” and click on it. Then click **Delete**. Click **OK** to close this window, then **OK** to close the Internet Options window.

12. Restart the installation program by following the instructions on page 3. If you still receive a security warning message, please contact Telecor Technical Support.
13. When the Nurse Courier 3 Editor has been successfully installed, restore your internet security settings to their previous state.

